

**DISTRICT OF COLUMBIA'S  
Early Childhood System  
Approach to Child Health,  
Development, Education  
and Well-being**

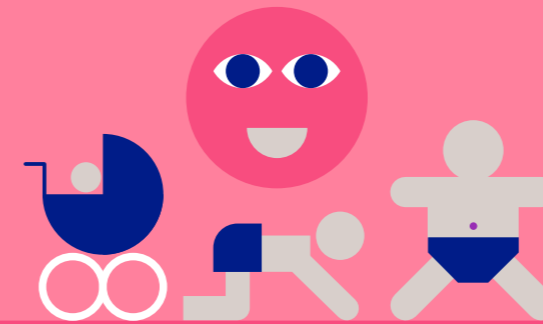
**QUALITY IMPROVEMENT NETWORK (QIN):  
Improving the quality of care for DC's most vulnerable infants and toddlers**

**QIN Performance Indicators**

Center- and home-based providers are able to deliver and sustain quality child development learning facilities



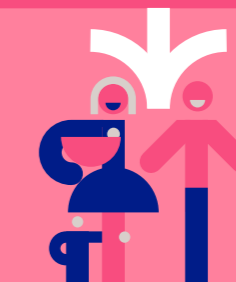
Increase center- and home-based providers ability to partner with families to identify and respond to any child or family needs or risks



Increase successful linkage to needed services and supports



Enhance the families' ability to advocate for and access needed services



**QIN Comprehensive Services**

Provide training and technical assistance to center- and home-based providers to increase a family's access to quality resources and referrals



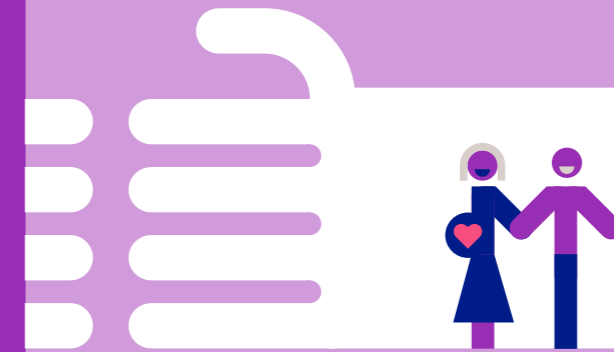
Establish a learning community that shares resources and expertise regarding best practices for child development from birth to three



Provide coaching and leadership development to center- and home-based providers on quality child development learning environments



Inform larger service system partners of families' experience with services and communicate barriers to improve service access and flow



**OUR AIM**



To improve outcomes for children beginning at birth and throughout their childhood by addressing racial and social inequities in the District of Columbia

**Collective Actions**

Sustain active diverse local leadership

Develop new policies, identify resources and maximize assets

Activate/build skills of cross-sector early childhood workforce



Improve the organizational performance of center- and home-based early childhood providers



Strengthen and align a risk-based tiered response to care/needs

